

SKODA



The all-new
Superb

To lead is to explore

On the road, you can lead your way forward. With the right partner, you'll be able to explore the world. Make your life smarter. Give your family a space to grow. The Škoda Superb is that partner.

The all-new Superb comes with even more space for passengers and anything they might bring. A smarter way of control that combines the digital flow with a tactile experience. Next-level comfort with features like Ergo seats and even more practicality. A new vision of what your drive could be.

The all-new Škoda Superb. To lead is to explore.





The look to be followed

Looking smart and driving smart can be the same thing. We made the new Superb more efficient and more practical. We also turned it into a new vision of how a family explorer might look. Lead your way to the next adventure. And look great doing it!



Smooth & sharp at the same time

Smooth lines born from crystalline structures. A sleek shape built around practicality. The new Superb is large enough for many personalities. A safe space for whoever you might want to be.



Practical elegance

From the unmistakable, imposing front fascia with bold, wide grille and sharp-edged Crystallinium headlights, the smooth lines of the bodywork flow towards the spacious rear. Under the elegant, aerodynamic shape that cuts through air even easier than before, the new Superb once again offers exceptional space and practicality.

Thanks to the longer and higher body, all passengers have even more headroom. The stylish rear hides the largest luggage space in the class. Overall, the Superb once again proves that attractive looks, effective aerodynamics, and great practicality can go hand in hand.



LED Matrix beam headlights

Crystal clear view with a Crystallinium style. The LED Matrix beam headlights provide great visibility even with other cars around. The coloured crystalline element accentuates the sharp contours of the headlights, adding a touch of elegance and visual appeal.

LED rear lights with animated indicators

With crystalline elements inside, the LED rear lights with animated indicators create an unmistakable and easy-to-recognize visual signature. This look is underscored by the use of full LED technology and the dynamic turn signals, which illuminate sequentially towards in the direction you are turning.



Virtual Pedal

Full hands are not a problem anymore. With Virtual Pedal, just a swing of the foot under the bumper is enough to open the door. Available in combination with KESSY and electric 5th door.

Walk-away KESSY

Never forget to lock your car ever again. With the new walk-away function, the Keyless Entry Start and Exit System will not only lock and unlock your car with a touch of any of the four door handles, but will also automatically lock the doors when you walk away with the key.



A space to lead

A digital world that's nice to touch. A luxury feeling from sustainable materials. The new Superb merges traditions with a vision of the future. It leads the way to the digital world while retaining the intuitive tactile controls. Its sustainable new materials are attractive to look at and pleasant to touch. With the new column-mounted shifter and sleek Smart Dials, there's plenty of room for clever ideas and handy storage. The ambient lighting gives the interior a unique atmosphere, highlighted by a myriad of smart details.



Head-up Display and Virtual Cockpit

All the key information right in front of you. The standard 10" Virtual Cockpit offers driving data in an easy-to-comprehend, customisable view. In addition, the Head-up Display can be selected as an optional extra, showing the most crucial information and navigation guidance right on the windscreen.

All the information, as you need it.

See what you need when you need it. With the Head-up Display, 10" Virtual Cockpit, and 13" Škoda Infotainment, the new Superb keeps you in the picture, with information ranked by importance.



Infotainment screen

The world at your fingertips. With a 13" touchscreen, the new Škoda Infotainment offers an even clearer way of displaying all the information and entertainment features that will make travelling a truly enjoyable experience. Smoother, faster operation thanks to the new generation of MIB system.

Display Cleaner

An always clean and shiny screen. Easily remove smudges and fingerprints from the infotainment display or any other shiny surface. The Display Cleaner is neatly stored in the front armrest, it's easily on hand whenever you need it.



A leader in intuitive control

With everything at your fingertips, keeping things under control is easier than ever before. And with a new way to use space, there's more room for things you might need. With the Škoda Smart Dials and column-mounted shifter, the new interior concept has been born.



Škoda Smart Dials

The best of both worlds. The Škoda Smart Dials combine the best features of displays and physical controls. By pressing or turning the dials, you have instant access to key functions. See the selected function and its status on the display in the middle or use the tactile dials to set the temperature, volume, or fan speed.

Jumbo Box

Have everything you need on hand. Jumbo Box not only offers ample space, but also clever ways to store everyday items. Plus special holder for Display Cleaner to keep your screens shiny, and moveable glasses holder.



Ergo seats

Comfort even on the longest drives. With 14-way electric adjustment, 4-way lumbar support, and Advanced massage functions, the Ergo seats were designed with the health of your back in mind. Tested by the German AGR (Healthy Back Campaign) organisation. With heating and cooling for even greater comfort.

Gear selector

Easy control, more space. Mounted on the steering column, the gear selector is right at your fingertips. It also leaves the steering column free for more storage space.



Ambient lighting

New styles of décors, including Melange grey or Swan drawing, pair together with improved, multi-coloured ambient lighting to create a unique atmosphere on board.

Always charged

The phone box provides wireless charging for your smartphone with ventilation to prevent your device from overheating. This compartment is not only easily accessible, but is also suitable for large display devices.



Take the online world with you



Always connected

The infotainment screen is not just larger than ever before. It also offers access to even more features, like the set-up for improved ambient lighting, in a brand-new, smooth virtual environment. Explore the world in a digital way.



Where small details do big things

Leading forward is easier with a little help. Someone to take care of the small things. The new Škoda Superb thinks of everything. Smart ways to store little things, clever ways to work on the go. Surprising stuff to keep your family entertained.



Armrest with tablet holder

Your in-car entertainment or work station while your car is stationary. Enjoy a film or watch a presentation on the tablet, and place your drinks safely in the cup holders.

Double pocket

Keep your things organised with the double pockets on the rear sides of the front seats. The larger one is perfect for a notebook or laptop computer, while the smaller one nicely fits a smartphone.



Space for everything. Place for everything.

Not just biggest. Smartest. There is not only a space for everything, with 645 litres in liftback version and 690 litres in the combi. You can also give every thing its own place. Hooks, nets, cargo elements, double floor and other smart features are there to keep your life on the road organised.



Movable multifunctional storage

The practical net under the roller cover is perfect for storing items such as life jackets, handbags, or other light items. It is perfect for things that you want easily on hand and away from heavier items in the boot.

Electric roller cover

The roller cover off the boot automatically retracts when the tailgate is opened and extends again when it is closed. It can be unlocked for manual operation, for example when carrying large items.

Airbags

The new Superb offers eight airbags:

- Driver and passenger
- Driver knee
- Front side airbags
- Centre airbag
- Curtain airbags



Even safety can multitask

Exit Warning System



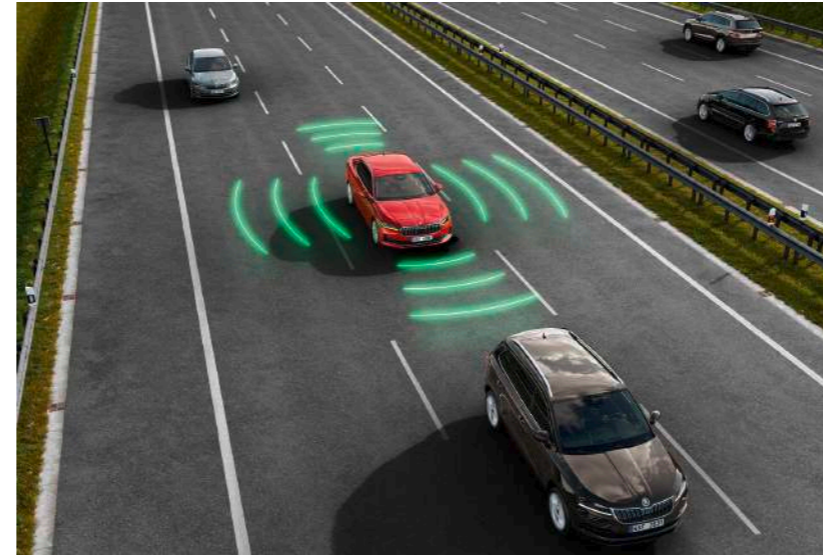
To make exiting the parallelly parked vehicle safer and easier, the Exit Warning System monitors the area behind the car using the two nanoradars under the rear bumper cover and warns driver or passenger that a vehicle, a pedestrian or a cyclist is approaching using visual signals.

Rear Cross Traffic Alert



The Rear Cross Traffic Alert system helps drivers safely reverse out of parking spaces by detecting vehicles approaching from the sides. It uses radar sensors to monitor the area behind the car and provides visual and auditory warnings when a potential collision is detected. It can also automatically apply the brakes to prevent or minimise a collision.

Emergency Assist



Emergency Assist intervenes if the driver becomes incapacitated. If no steering wheel movement or other driver activity is detected for a defined amount of time, a warning signal sounds. If the driver fails to react, the system initiates a short swerve. If there is still no reaction from the driver, the vehicle is automatically brought to a complete standstill, while the hazard lights are automatically activated.

Park Distance Control & Manoeuvre Assist



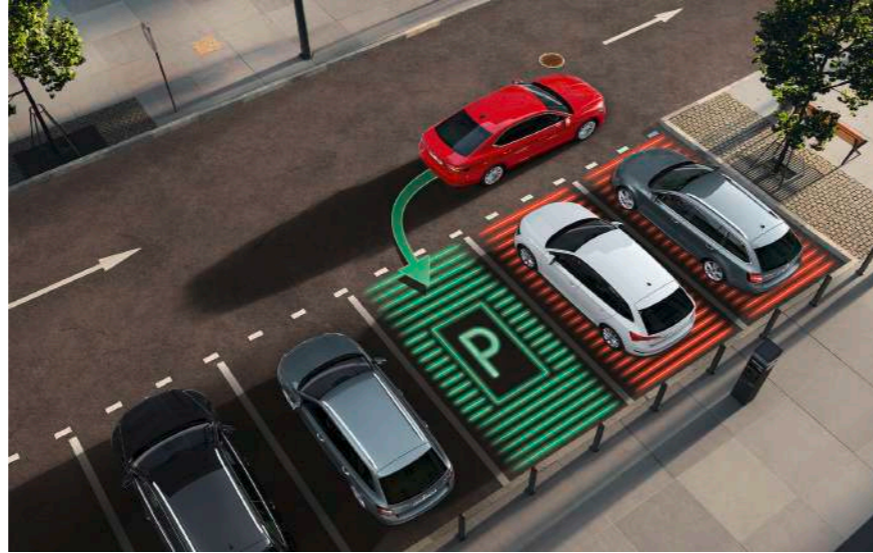
The Park Distance Control warns of the potential risk of colliding with obstacles during parking by drawing data from the sensors, the driving parameters, and the steering wheel angle. To avoid those parking situations where you don't brake in time in response to the distance alerts, the Superb incorporates Manoeuvre Assist, a feature that stops the car to avoid collision.

Adaptive Cruise Control



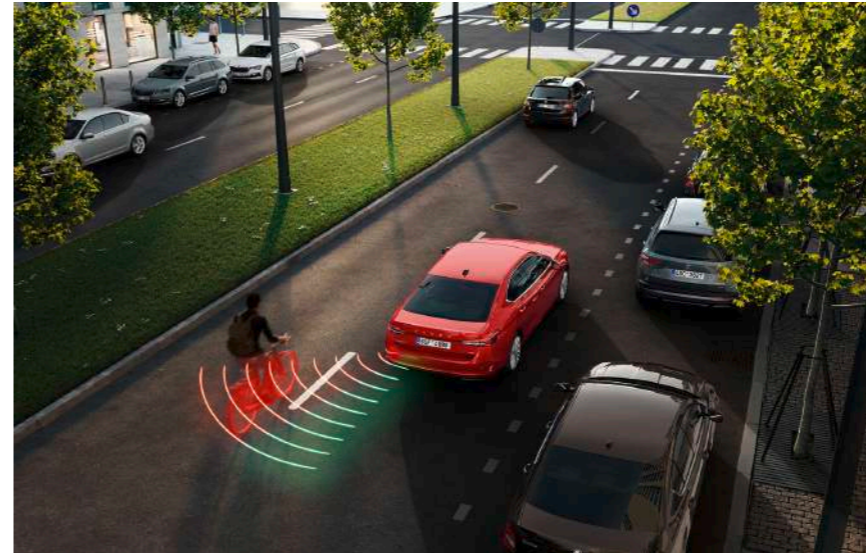
The Adaptive Cruise Control (ACC) maintains a safe distance from the vehicle ahead at a selected speed, controlling the engine and actuating the brakes to automatically accelerate or decelerate as needed. The system combines the cruise control system with radar-based distance controller.

Intelligent Park Assist



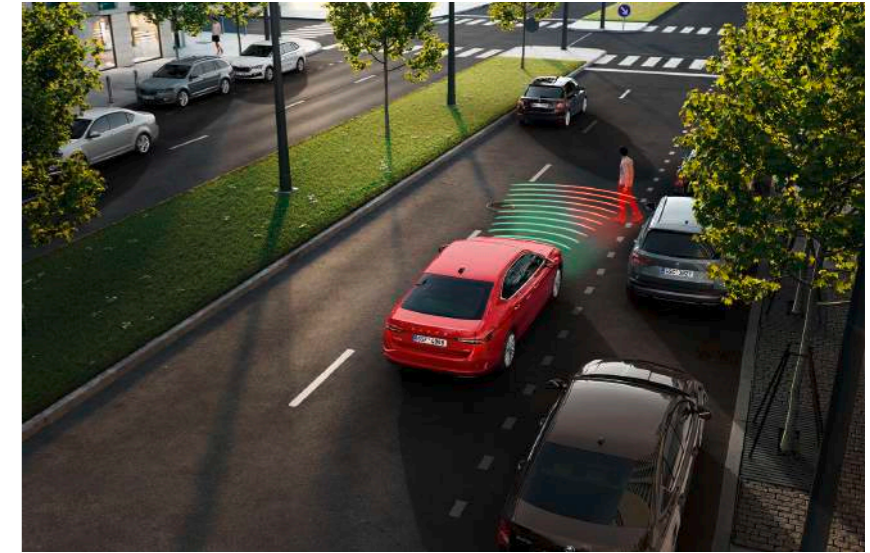
Intelligent Park Assist helps the driver to park the vehicle in a line of parallel-parked or a row of perpendicular-parked vehicles, and also to exit from a line of parallel-parked vehicles. The system controls the steering wheel, the brakes, the accelerator, and the direction of travel (forwards and backwards). It also detects objects and pedestrians and avoids collisions with them.

Side Assist



The Side Assist system works through nano radar sensors in the rear apron which warns of dangerous lane changes and detects vehicles approaching from up to 90 meters behind.

Front Assist



In addition to vehicles and pedestrians, the Front Assist responds to cyclists crossing the vehicle's path. At speeds between 5 km/h to 85 km/h, the system will trigger a cascade of warnings or apply the brakes to perform an emergency stop.



Laurin &
Klement



A crystal-clear path to luxury

Whatever your destination in life may be, driving the Superb Laurin & Klement means that you have already arrived. Its quiet elegance and long list of luxury features will please even the most discerning drivers and passengers.



Style and functionality

As is usual for Škoda models bearing our founders' names the Superb Laurin & Klement is here to make your day feel special; to make you feel special. It starts on the outside, with Unique Dark Chrome exterior trim package, unique multi-spoke 18" alloy wheels and the unmistakable look of LED Matrix headlights with coloured Crystallinium elements. Once you open the door, the Boarding Spot lights will allow you to see where you step – and provide you with more style. Whether on the move or just parked, the Superb L&K makes the world know that you have arrived.



When only the best is enough

Inside the spacious cabin is where you will enjoy the Superb Laurin & Klement at its best. Just find the perfect position in the electrically-operated Ergo Seats, save it into memory, or enjoy the comforts of heating, ventilation and the massage function. Be immersed in the rich sound of the Canton Sound System, which stands out even more thanks to the Acoustic Package. Change the Ambient Lighting to suit your mood and select the right Driving Mode (including the 2-valve DCC suspension) for your driving style. The Superb L&K is the answer whether you're rushing to a meeting or enjoying a quiet Sunday drive.



Laurin & Klement badge

The uniqueness of the Laurin & Klement cars is emphasised by the badge included on the sides. It's a tribute to our famous founding fathers, Laurin and Klement, and a symbol for the highest craftsmanship, beautiful and functional design, and innovation.

Ergo seats

Enjoy the best possible comfort on any journey, long or short. The Ergo seats were created for the health of your back and tested by the German organisation AGR (Healthy Back Campaign). To pamper you even more, they are heated, cooled, and equipped with a massage function, offering several modes and intensity levels. The Ergo seats are available in two upholstery colours, Black and Cognac.



Specifications shown may not match local Middle East specifications, please contact your local dealer for more information



Loft interior

Grey fabric pad
Black polished décor
Grey fabric upholstery

Selection

Standard equipment for the Selection version includes, for example 3-zone Climatronic and heated front seats, Smart Dials, 10" digital instrument panel and 10" Infotainment, leather multifunction steering wheel, four USB-C ports, wireless charging, and cruise control. The Selection trim is available with a choice of four interior design selections.



Loft

Grey fabric upholstery, together with grey fabric pad and black polished décor, create an elegant, modern style. Heated, partly electric, six-way seats with adjustable lumbar and thigh support provide comfort on any drive.



Lounge interior

Artisyn grey pad
Tactile lines décor with Unique Dark Chrome
Artisyn grey upholstery with mustard stitching

Selection



Lounge

Artisyn grey upholstery with mustard stitching, together with Artisyn grey dashboard pad and Tactile lines décor with Unique Dark Chrome, create a smart, luxurious look. Heated, partly electric, six-way seats with adjustable lumbar and thigh support provide comfort on any drive.



Suite Black interior

Black leatherette pad
Melange grey décor with Unique Dark Chrome
Black leather/leatherette/fabric upholstery

Selection



Suite Black

Black leather and leatherette upholstery, together with black leatherette dashboard pad and Melange grey décor with Unique Dark Chrome, create a unique and stunning look. Fully electric Ergo seats with heating, cooling and massage functions provide maximum comfort anywhere you go.



Laurin & Klement Black interior

Black leatherette pad
Kida décor with Unique Dark Chrome
Black leather/leatherette/fabric upholstery

Laurin & Klement



Laurin & Klement Black

The elegant Soul Black leather seat upholstery on the seats and leatherette of the same colour on the dashboard and door inserts together create a luxurious ambience on board. The overall style is further enhanced by the Kida décor with Unique Dark Chrome. Fully electric Ergo seats with heating, cooling and massage functions provide maximum comfort anywhere you go.



Laurin & Klement Cognac interior

Cognac leatherette pad
Kida décor with Unique Dark Chrome
Cognac leather/leatherette/fabric upholstery

Laurin & Klement



Laurin & Klement Cognac

The eye-catching Soul Cognac leather seat upholstery on the seats and leatherette of the same colour on the dashboard and doors combine to create a stunning ambience on board. The unique look is further enhanced by the Kida décor with Unique Dark Chrome. Fully electric Ergo seats with heating, cooling and massage functions provide maximum comfort anywhere you go.

Colours



Pebble Silver metallic



Ice Tea Yellow metallic



Purity White uni



Carmine Red metallic



Cobalt Blue metallic



Energy Blue uni



Graphite Grey metallic



Ebony Black metallic

Wheels



19" Aniara silver alloy wheels with black aero covers



19" Veritate anthracite alloy wheels*



19" Veritate silver alloy wheels



18" Belatrix anthracite alloy wheels*



18" Dofida silver alloy wheels



18" Bosona silver alloy wheels with black aero covers



17" Mintaka silver alloy wheels



16" Sagitta silver alloy wheels



17" Alrakis black/silver alloy wheels

* Available for Laurin & Klement models

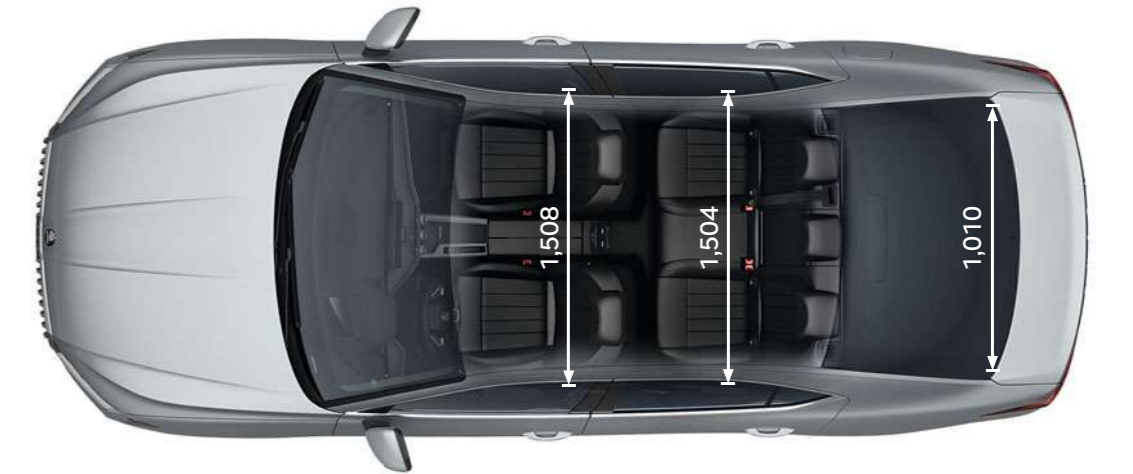
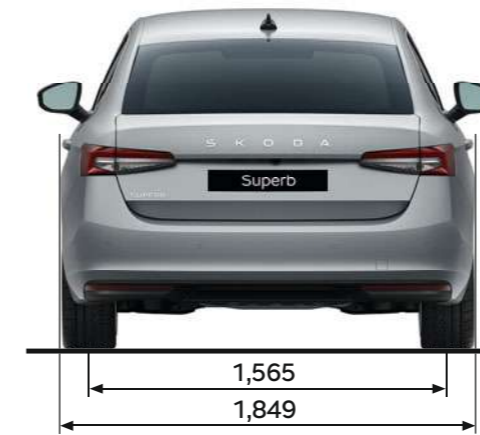
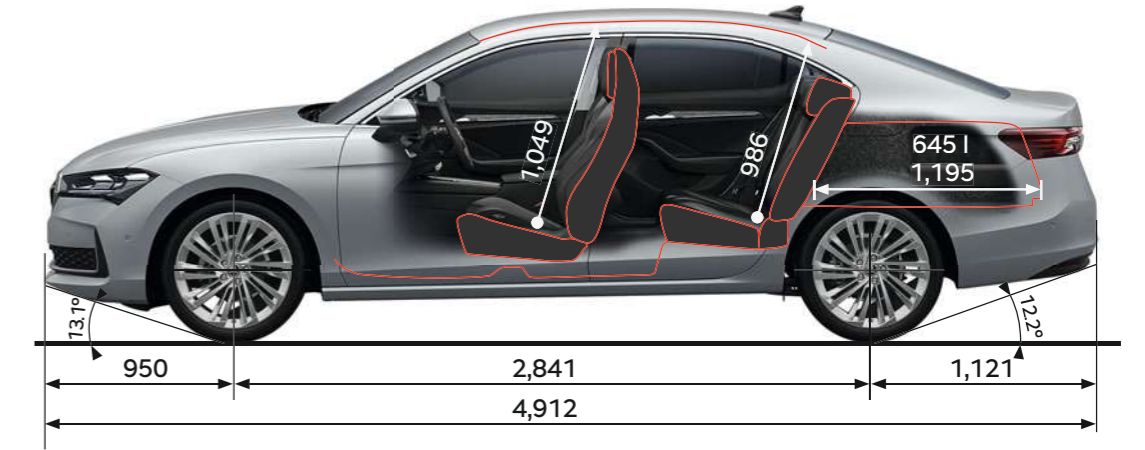
Technical Data

2.0 TSI / 190 hp

Engine	Turbocharged petrol engine
Cylinders/Cubic capacity (cc)	4/1,984
Max. performance/Revs (hp/rpm)	190/4,200–6,500
Max. torque/Revs (Nm/rpm)	320/1,400–4,100
Fuel	Petrol, RON 95

Performance	
Maximum speed (km/h)	244
Acceleration 0–100 km/h (s)	7.8
Fuel consumption GSO (km/l)	14.6

Power transmission	
Type	4x2
Transmission	Automatic 7-speed DSG



Technical Data

2.0 TSI / 190 hp

Engine

Turbocharged petrol engine

Cylinders/Cubic capacity (cc)	4/1,984
Max. performance/Revs (hp/rpm)	190/4,200–6,500
Max. torque/Revs (Nm/rpm)	320/1,400–4,100
Fuel	Petrol, RON 95

Performance

Maximum speed (km/h)	240
Acceleration 0–100 km/h (s)	7.8
Fuel consumption GSO (km/l)	14.4

Power transmission

Type	4x2
Transmission	Automatic 7-speed DSG

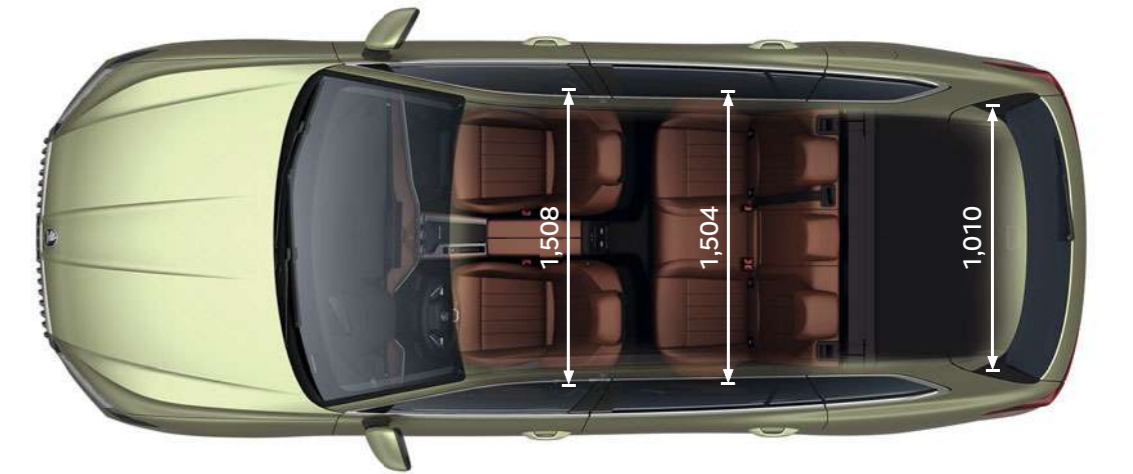
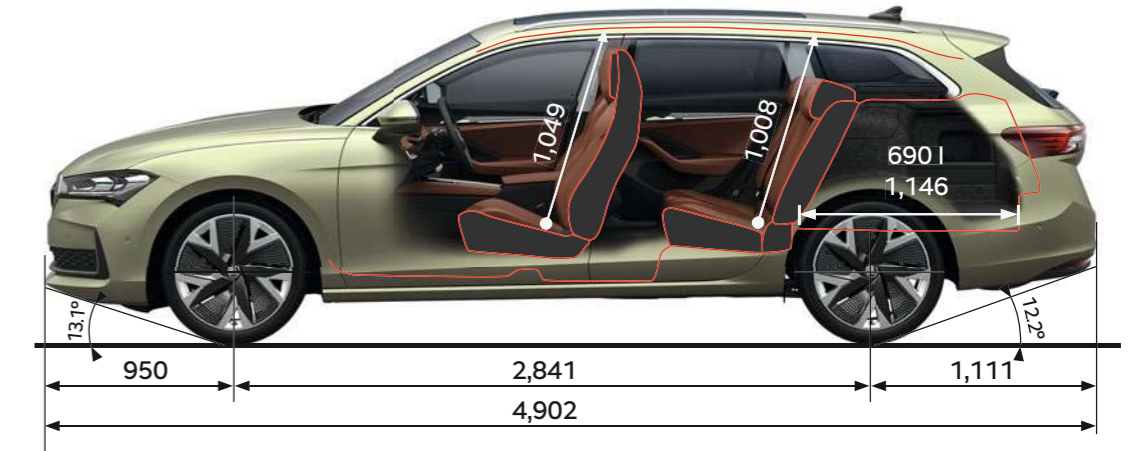




Image disclaimer

The images presented in this catalogue (brochure) are used for illustrative purposes only and are not intended to form part of any contract or warranty. They display pre-series cars and certain illustrations, features, parts and equipment may differ from the actual production cars and from country to country. To get the exact specification of features, parts and equipment, please get in touch with your nearest local Škoda dealer.

If you've enjoyed reading
about it — imagine driving it.
**Call us to arrange
a test drive!**

07/2025